

SF1000 Parade Bin



Parade Bin with PMO862 perforated wrapper

PRODUCT FEATURES

- High strength fabricated steel construction
- All fixings: Stainless Steel 316
- Supplied fully assembled
- Galvanised Steel liner with handles
- Finished in any standard powder coat colour

DIMENSIONS

- Standard Metal Body:
Height 915mm, width 458mm
- Hardwood Timber Batten Body:
Height 915mm, width 487mm
- Capacity 82L

BODY SPECIFICATIONS

Body

- Hardwood Timber Battens
- Perforated Material (see next page)
- Custom (see next page)

Concave Lid

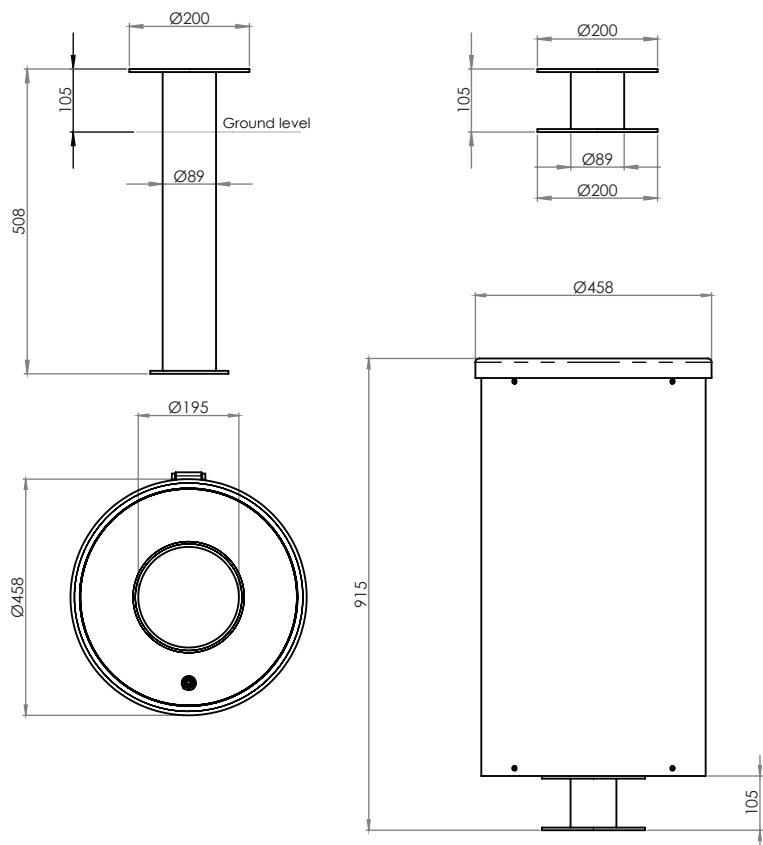
- Spun 3.0mm Aluminium or optional 1.5mm Stainless Steel.
- Ø195mm opening for litter
- Fitted with Southco lock
- No Lid
- Aluminium
- Aluminium with ash tray
- Stainless Steel
- Stainless Steel with ash tray

Base

- Mild Steel
- Hot Dip Galvanised

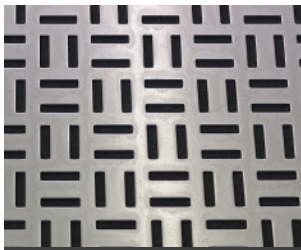
Fixing

- Surface Mount or Extended Leg



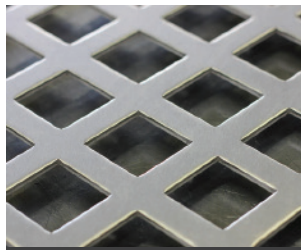
SF1000 Parade Bin

Standard Perforated Options



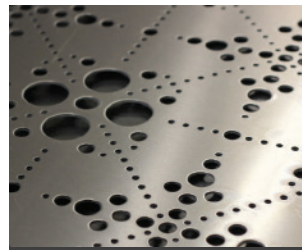
Bauhaus

Available in Aluminium and Pre-Galv



Espalier

Available in Aluminium and Pre-Galv



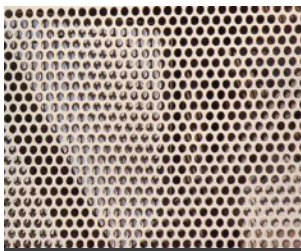
Marrakech

Available in Aluminium and Pre-Galv



Triangulum

Available in Aluminium and Pre-Galv



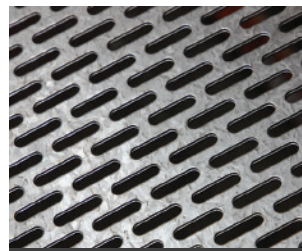
PMR266

Available in Stainless Steel, Aluminium and Pre-Galv



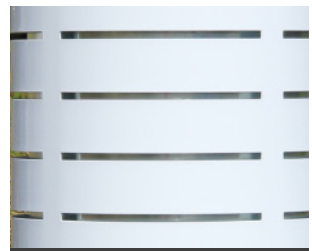
PMO730

Available in Stainless Steel, Aluminium and Pre-Galv



PMO862

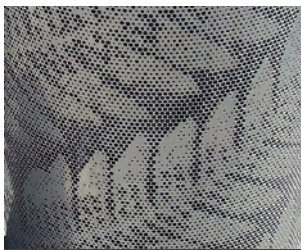
Available in Stainless Steel, Aluminium and Pre-Galv



Horizontal Slot

Available in Aluminium and Pre-Galv

Custom Options



Custom Perforation



Custom Perforation



Custom Laser Cut



Custom Laser Cut

Customise your own design or logo. Contact us to find out more about our perforated and laser cut customisation options.



Parade Bin with Hardwood Battens



Parade Bin with Triangulum wrapper



Parade Bin with PMO862 wrapper

SF1000 Parade Bin

Care & Maintenance Suggestions

Our products are constructed using a variety of different materials, all of which are highly corrosion resistant. Despite this, some care is required to maintain their good looks. The extent to which cleaning is required will depend on a number of factors including environmental conditions, construction activity and level of use.

MAINTAINING THE METAL SURFACES

To maintain the original appearance of the metal, it should be cleaned regularly using warm soapy water.

Stainless Steel: Rust spots or 'tea stains' can occur on the surface of the material which are normally caused by contamination from ordinary mild steel, particularly in areas where construction work has been undertaken. Such stains can be removed with careful use of an abrasive pad, being mindful of the direction of the grain.

Galvanised Steel: If the galvanised coating is significantly penetrated, a zinc rich primer should be applied to the damaged area to maintain its corrosion resistance.

MAINTAINING THE PAINTED OR POWDER COATED SURFACES

Clean regularly with warm soapy water. Should the paint become chipped or scratched, it can be touched up using an acrylic based paint.

MAINTAINING THE TIMBER

Dirt can be removed using mild detergents. If the timber is left untreated, over time it will gradually change to a silvery grey colour. The timber will remain structurally sound without further maintenance.

LINER

The bin is equipped with a heavy duty galvanized steel liner. To prolong the life of the liner Tilley recommends using plastic bin liners. This will also prevent seepage of liquids onto the surrounding pavement.

LOCKS, HINGES AND OTHER MOVING PARTS

All moving parts should be kept clean and lubricated to ensure a long life. A spray lubricant such as 'WD40' is widely available and well suited.



WELLINGTON

39 Randwick Road, Lower Hutt,
Wellington 5010, New Zealand

T +64 4 387 7009 E saleswgtn@tilleyandpatton.co.nz

AUCKLAND

26 Aranui Rd, Mt Wellington,
Auckland 1060, New Zealand

T +64 9 527 7385 E salesakld@tilleyandpatton.co.nz

CHRISTCHURCH

Level 1/306 Port Hills Rd, Hillsborough,
Christchurch 8022, New Zealand

T +64 3 331 6565 E saleschch@tilleyandpatton.co.nz

DOC 1014/1